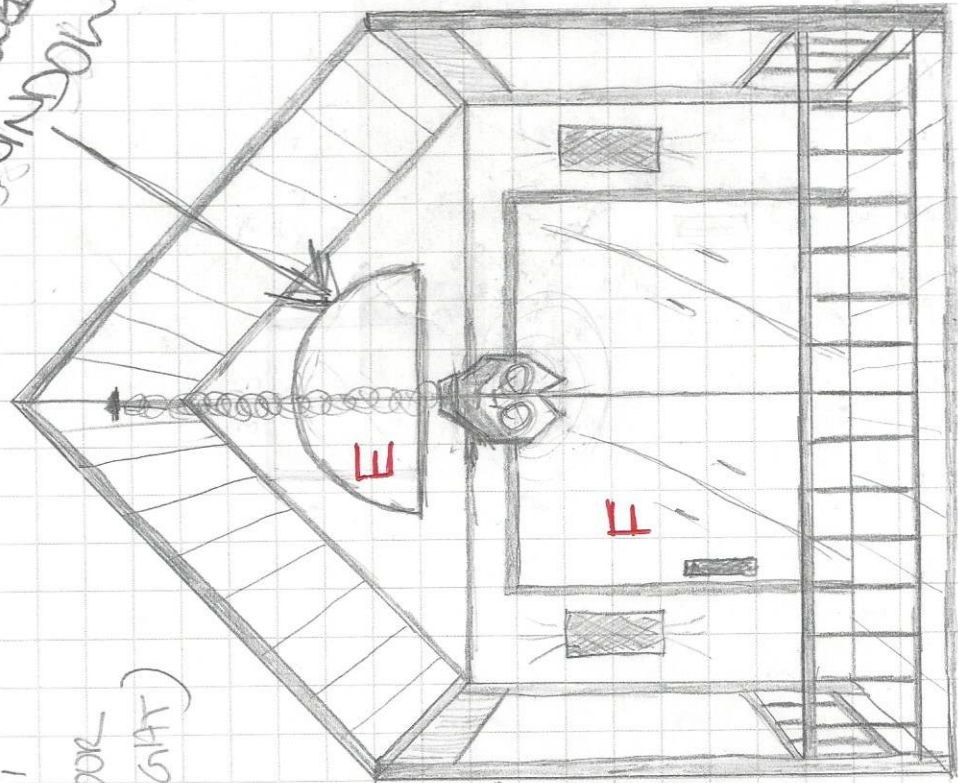


# \* DIMENSIONS \*

- 12' X 110'
- 10' SIDEWALLS
- 110' TOTAL HEIGHT
- 4' FRONT PORCH
- 8' BACK PORCH
- LOFT = 12' X 8'
- 8' FROM FLOOR (8' LOFT HEIGHT)

\* CENTERED WINDOW

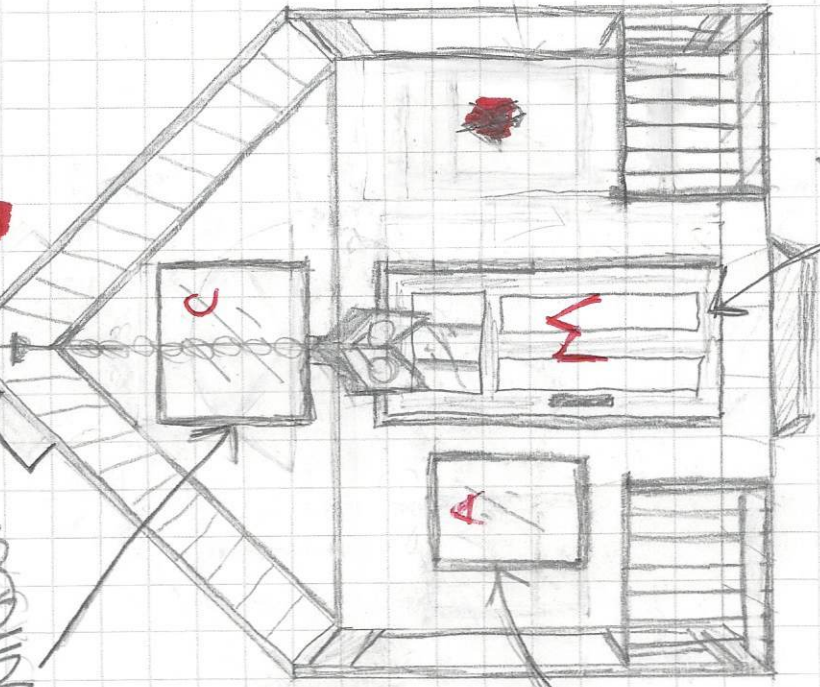


BACK

2 1/2" FROM SIDEWALK \* 1/2" FROM SIDEWALK

SKYLIGHT

\* CENTERED WINDOW \* D



FRONT

\* 20" FROM SKYLIGHT \* 10"

\* 1/2" FROM LEFT SIDE WALK

16'

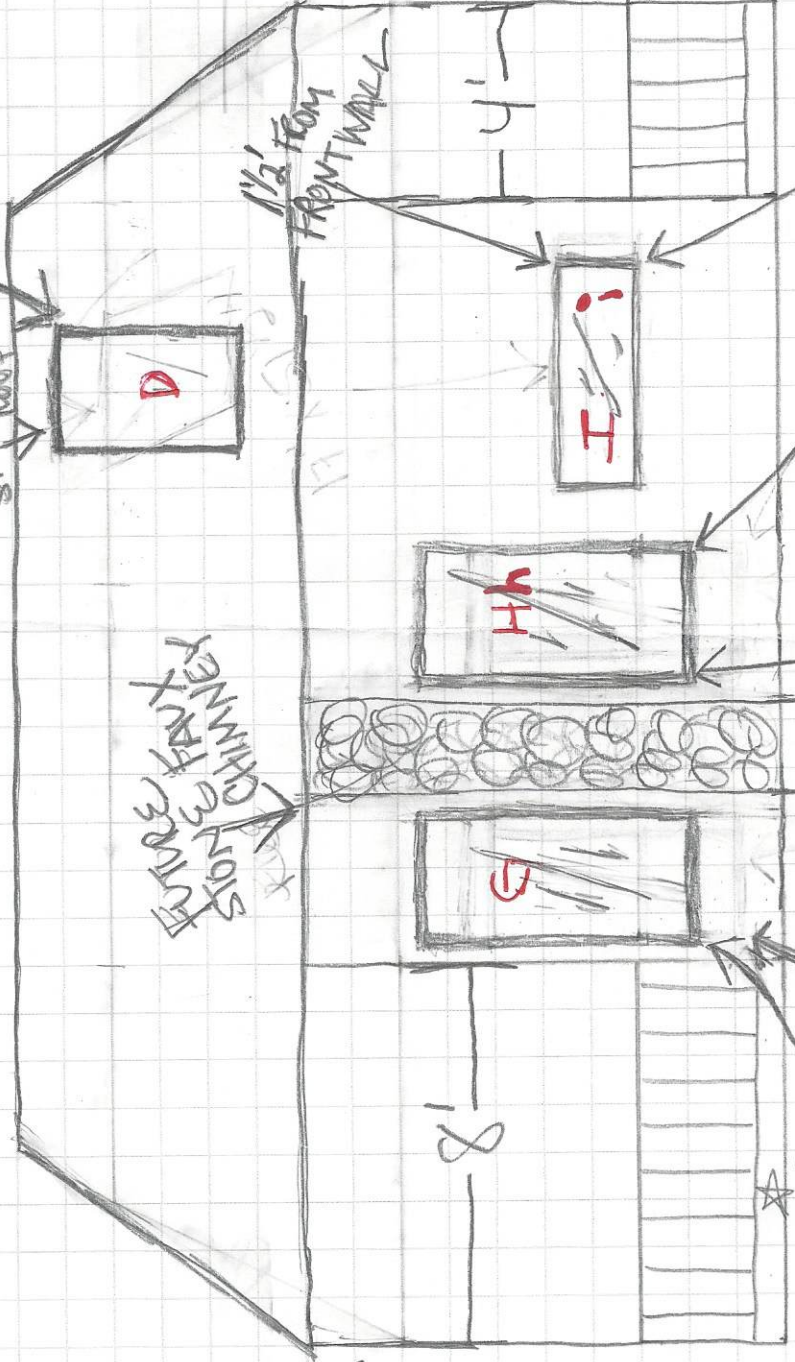
10'

FRONT

BACK

\* 2 1/2' FROM FRONT WALL

\* ON RH SIDE OF ROOF SKYLIGHT



37" FROM INTERIOR FLOOR

6' FROM BACK WALL

6' FROM BACK WALL

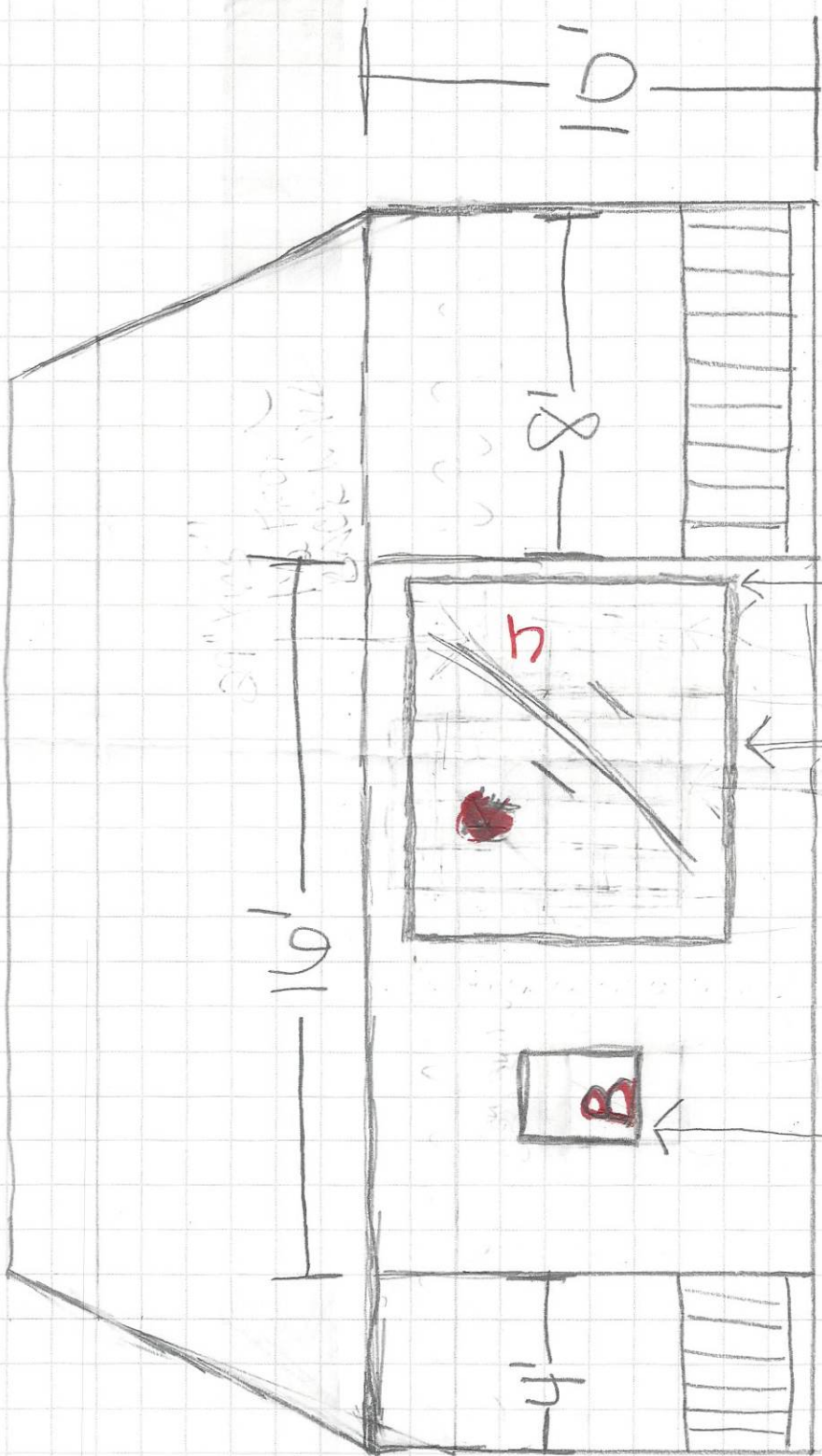
18" STONE

6' FROM BACK WALL

\* 6' FROM INTERIOR FLOOR

RIGHT SIDE (Looking at back porch)

6" ABOVE INTERIOR FLOOR → (36" KITCHEN CABS + COUNTER)

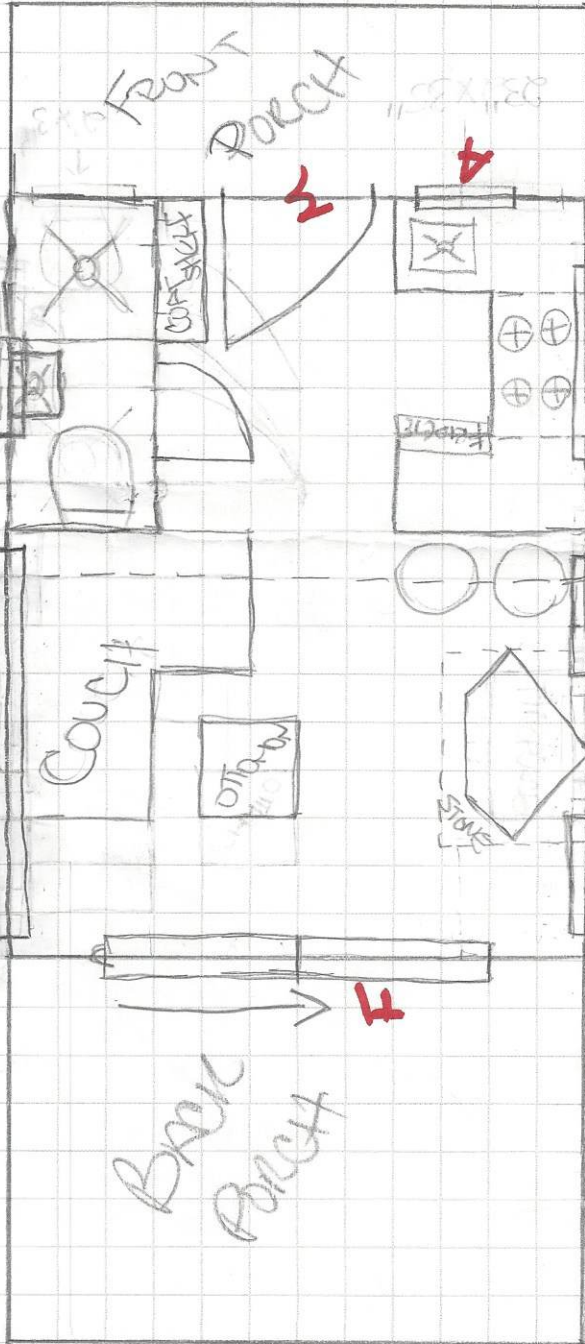


6" from Back Wall

7' x 8'

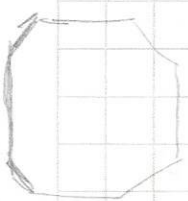
4" FROM FLOOR

LEFT SIDE (LOOKING AT BK PORCH)



1.9.07 x 9.57  
 3.5' x 3.5'  
 3.5' x 3.5'

- Side = 88"  
 - From wall = 89"  
 - width = 49"



\*FIREPLACE

FLOOR PLAN

1/2' FROM SIDEWALK

FIREPLACE

1/2' FROM SIDEWALK

1/2' FROM SIDEWALK

1/2' FROM SIDEWALK

23' x 35'